


RESEARCH

Open Access



A β 42 treatment of the brain side reduced the level of flotillin from endothelial cells on the blood side via FGF-2 signaling in a blood–brain barrier model

Tomohisa Nakamura^{1,3†}, Tadahiro Hashita^{2†}, Yuxin Chen¹, Yuan Gao¹, Yang Sun¹, Sadequl Islam¹, Hiroyuki Sato², Yasuyuki Shibuya³, Kun Zou¹, Tamihide Matsunaga² and Makoto Michikawa^{1*} 

Abstract

Our previous study showed that the flotillin level is decreased in the blood of patients with Alzheimer's disease (AD) when compared to that of patients with non-AD and vascular dementia; however, the molecular mechanism remains to be determined. In this study, to elucidate whether A β accumulation in the brain has an effect on the blood flotillin level, we used our previously established blood–brain barrier (BBB) culture model using microvascular endothelial cells obtained from human induced pluripotent stem cells (iBMECs) and astrocytes prepared from rat cortex. In this BBB model with iBMECs plated on the upper compartment (blood side) and astrocytes plated on the lower compartment (brain side), the trans-endothelial electrical resistance values are high (over 1500 Ωm^2) and stable during experiments. We found that the addition of A β 42 (0.5 and 2 μM) to the brain side significantly reduced the level of flotillin secreted by iBMECs on the blood side. The level of basic fibroblast growth factor (FGF-2) in the brain side was significantly reduced by A β 42 treatment, and was accompanied by a reduction in the level of phosphorylation of the fibroblast growth factor receptor in iBMECs. The brain-side A β 42 treatment-induced reduction of flotillin secretion into the blood side was restored in a dose-dependent manner by the addition of FGF-2 into the brain side. These results indicated that A β accumulation in the brain side reduced FGF-2 release from astrocytes, which attenuated FGF-2-mediated iBMECs signaling via the FGF-2 receptor, and thereby reduced flotillin secretion from iBMECs on the blood side. Our findings revealed a novel signaling pathway crossing the BBB from the brain side to the blood side, which is different from the classical intramural periarterial drainage or lymphatic-system-to-blood pathway.

Keywords Amyloid β -protein, Alzheimer's disease, Blood flotillin, Microvascular endothelial cells

[†]Tomohisa Nakamura and Tadahiro Hashita have contributed equally to this work

*Correspondence:

Makoto Michikawa

michi@med.nagoya-cu.ac.jp

¹ Department of Biochemistry, Graduate School of Medical Sciences, Nagoya City University, Kawasumi 1, Mizuho-Cyo, Mizuho-Ku, Nagoya 467-8601, Japan

² Department of Clinical Pharmacy, Graduate School of Pharmaceutical Sciences, Nagoya City University, 3-1 Tanabe-Dori, Mizuho-Ku, Nagoya 467-8603, Japan

³ Department of Maxillofacial Surgery, Graduate School of Medical Sciences, Nagoya City University, Kawasumi 1, Mizuho-Cyo, Mizuho-Ku, Nagoya 467-8601, Japan



Introduction

Alzheimer's disease (AD) is a progressive neurodegenerative disease that is the most common type of dementia. It is clinically characterized by the loss of cognitive function accompanied by the deposition of extracellular amyloid β -protein ($A\beta$) aggregates called amyloid plaques, and the formation of intracellular neurofibrillary tangles that consist of phosphorylated tau [1, 2].

The diagnosis of AD is made on a clinicopathological basis, and a definitive diagnosis cannot be made until post-mortem confirmation of the presence of $A\beta$ plaques and neurofibrillary tangles [3]. Therefore, it is difficult to make a differential diagnosis of AD, and to accurately predict the prognosis and monitor the disease based on clinical evidence alone, even for dementia specialists [2]. It is well-known that markers of $A\beta$ and tau protein in the cerebrospinal fluid and brain $A\beta$ deposition on positron-emission tomography (PET) are the most promising diagnostic markers [4]. However, cerebrospinal fluid and PET examinations are very invasive and/or expensive, and their clinical use is limited to only a few specialized centers.

To facilitate the diagnosis of AD, many studies have been performed to identify markers, including blood-based biomarkers, for clinical diagnosis [2, 4]. In addition, promising results have been reported from clinical trials of disease-modifying drug candidates, mainly immunotherapies targeting the $A\beta$ pathology [2, 5]; thus the use of biomarkers has become more important than ever in terms of ensuring that AD patients have access to the appropriate therapies available and for an accurate prognosis in the early stages of their disease.

We recently showed that flotillin may serve as a blood marker for the estimation of brain amyloid deposition and early diagnosis of AD [6]. Flotillin-1 and -2 (reggie-2 and -1) were first discovered as proteins expressed by retinal ganglia during axon regeneration [7], and have since been widely used as markers for lipid rafts and exosomes. Flotillin-1 and -2 are ubiquitously expressed and highly conserved proteins that are involved in multifarious cellular events, including cell signaling, endocytosis, protein trafficking, and gene expression. However, the molecular mechanism by which the level of flotillin in blood decreases in patients with AD remains unknown.

In AD, abnormal accumulation of $A\beta$, tau phosphorylation, and inflammation occur in the brain, and it is assumed that $A\beta$ accumulation in the brain has an effect on endothelial cells facing the brain side and also facing the blood side, and that it leads to reduced flotillin secretion from endothelial cells on the blood side. In this study, we examined the effect of $A\beta$ treatment of the brain side on flotillin release from endothelial cells on the

blood side using a BBB co-culture system (in vitro BBB model) [8].

Material and methods

Astrocyte culture

Primary astrocyte cultures were prepared from newborn Wistar-rat (Japan SLC, Inc., Shizuoka, Japan) as described previously [9]. In brief, brains of postnatal day 1 rat were minced and incubated in Dulbecco's modified Eagle's medium (DMEM) in the presence of 100 $\mu\text{g}/\text{mL}$ DNase I and 0.25% trypsin. Dissociated cells were plated on T75 flasks. After 10 days of incubation, flasks were shaken for 1 h at 37 °C to eliminate oligodendrocyte. The enriched astrocyte was checked by immunostaining for glial fibrillary acidic protein (GFAP), and re-plated onto different cell culture substrates. The culture of astrocyte that had been in vitro for less than 4 weeks were used throughout.

Differentiation of human induced pluripotent stem (iPS) cells into iBMECs

Brain microvascular endothelial-like cells (iBMECs) were prepared as previously described [8]. In Brief, human iPS cells were cultured in iPSC medium (Dulbecco's Modified Eagle's Medium/Ham's F12 (Wako Pure Chemical Industries (Wako), Osaka, Japan) containing 20% knockout serum replacement (Invitrogen, Carlsbad, CA, USA), 2 mM l-glutamine (Wako), 1% minimal essential medium with non-essential amino acids (Invitrogen), and 0.1 mM β -mercaptoethanol (Sigma-Aldrich, St. Louis, MO, USA)) at 37°C in 5% CO_2 for 6 days. Then the culture medium was changed to EC medium (Human Endothelial-SFM (Thermo Fisher Scientific, Waltham, MA, USA) supplemented with 1% platelet-poor plasma derived bovine serum (PDS) (Alfa Aesar, Haverhill, MA, USA), 20 ng/mL FGF2, and 10 μM all-*trans* retinoic acid (RA) (Tocris Bioscience, Bristol, UK)). After 2 days, the cell were detached by Accutase (Nacalai Tesque, Kyoto, Japan) and re-plated on 0.3- cm^2 Transwell-Clear permeable inserts (0.4 μm pore size, Sabeu GmbH & CO. KG, Northeim, Germany) coated with a mixture of fibronectin (100 $\mu\text{g}/\text{mL}$; Wako) and collagen IV (400 $\mu\text{g}/\text{mL}$; Nitta gelatin, Osaka, Japan). These cells were then used to construct the in vitro BBB model.

In vitro blood-brain barrier (BBB) model

To construct in vitro models of BBB, iBMECs (3.0×10^5 cells/insert) seeded on the upper side of the Transwell inserts were placed in the well of 24-well culture plates containing no cells (iBMECs mono-culture). Astrocyte were plated on the 24-well plates with DMEM containing 10% FBS and 1% penicillin/streptomycin until the experiment. Finally, astrocytes were replaced

with serum-free medium before the experiment. Under these conditions, *in vitro* BBB models were constructed as shown on the scheme (Fig. 1A). For the experiment to examine the effect of Aβ42 in the brain on BBB, Aβ42 was added to the medium of the basal side of the 24-well culture plates.

Trans-endothelial electrical resistance (TEER) measurement
Barrier integrity in *in vitro* BBB models were analyzed by measurement of TEER.

TEER values were measured using Millicell-ERS (Merck Millipore, Burlington, MA, USA) according to the manufacturer’s instructions. During the measurement of the time-course of TEER values, the medium was not changed.

Western blot analysis

The conditioned medium were collected, and the cultured cells were lysed with RIPA buffer (50 mM Tris-HCl, pH 7.6, 150 mM NaCl, 1% NP-40, 0.5% sodium deoxycholate, 0.1% SDS) containing a protease inhibitor cocktail (Roche, Mannheim, Germany) and the phosphatase inhibitor cocktail solution I (FUJIFILM Wako Pure Chemical Corporation, Tokyo, Japan). Protein concentration were determined a BCA protein assay kit (Thermo Fisher Scientific, IL, USA). The protein samples were separated by SDS-PAGE and transferred to polyvinylidene difluoride membranes (Millipore, Billerica, MA, USA), which were blocked with 5% skim milk in TBS-T, and incubated overnight at 4°C with the following primary antibodies: Flotillin-1 (Product No, sc-133153, Santa Cruz Biotechnology, CA, USA), Flotillin-2 (BD

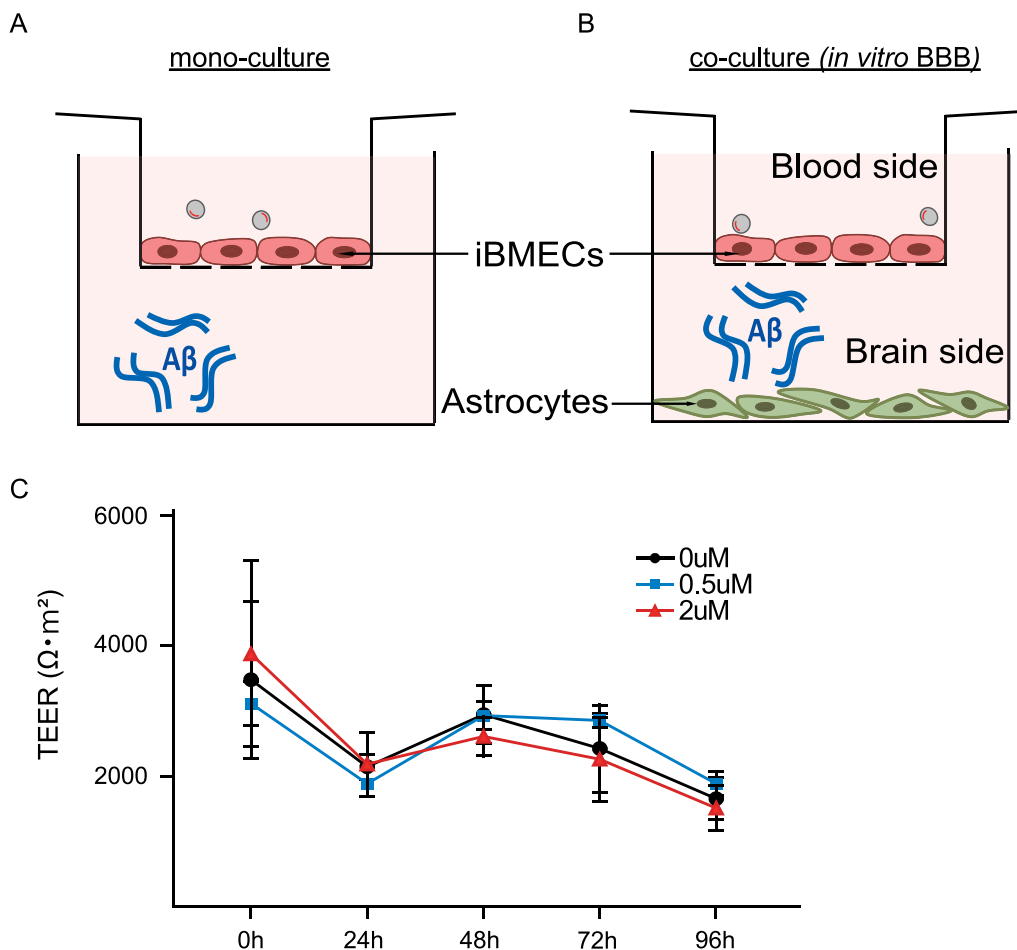


Fig. 1 A, B Schematic diagram of the *in vitro* BBB model comprising brain endothelial cells and astrocytes. In the *in vitro* BBB model, an insert membrane was used to construct the BBB, and brain endothelial cells were seeded onto the upper surface of the insert membrane, and astrocytes were seeded on the bottom of the wells. The upper side was taken to be the “blood side”, and the bottom side was taken to be the “brain side”. C Effects of Aβ on the TEER values in the *in vitro* BBB model. Statistical significance was calculated using one-way analysis of variance (ANOVA) and the Tukey test

Transduction Laboratories), FGF-2 (S Santa Cruz Biotechnology, CA, USA). Analysis of protein was carried out using HRP-conjugated secondary antibodies, and chemiluminescence signals were detected using Amersham Imager 680 (GE Healthcare, MA, USA).

ELISA

Prior to ELISA analysis, the CMs were concentrated up to about tenfold by ultrafiltration (Vivaspin500, SARTORIUS, Gloucestershire, UK). Each CM was then adjusted to a 4-fold concentration and used in the experiment. FGF-2 levels were determined using FGF-2 ELISA kit (Quantikine[®]ELISA, R&D systems, MN, USA), which is a quantitative sandwich enzyme immunoassay technique, according to the manufacturer's instructions.

Statistical analyses

Statistical analyses were performed using GraphPad prism 7.0 software (CA, USA). All values are presented as the mean \pm S.E. of at least three independent experiments. Student's *t* test was used to determine whether the results were significantly different between two groups. We compared group difference with one-way analysis of variance (ANOVA) followed by Tukey's multiple-comparison test for two or more groups against a control group. A *p* value of <0.05 was considered to represent a significant difference.

Results

A β 42 decreases flotillin secretion from iBMECs in the in vitro BBB model

First, to determine whether A β 42 affects flotillin secretion from brain microvascular endothelial cells (BMECs), we used a mono-layer culture model using iPS-derived BMECs (iBMECs) prepared from human iPS cells as reported previously [8] (Fig. 1A). Western blot analysis was performed using apical conditioned medium (CM) collected from iBMECs cultured for 96 h in serum-free media on the upper side (blood side) of the double chamber. We found that A β 42 treatment of the brain side did not affect flotillin secretion from iBMECs on the blood side (Additional file 1: Fig. S1A, B).

It is well-known that astrocytes secrete a variety of factors that contribute to the maintenance of the functions of BMECs in the BBB [10]. In light of this, we next examined the effect of A β 42 in the in vitro BBB model (Fig. 1B). In this culture model, the high trans-endothelial electrical resistance (TEER) values were over 1,500 Ωm^2 (Fig. 1C) during the experiments and the values are much higher than those obtained with other models using rodent cells [11, 12]. In this culture, A β 42 was added into the lower chamber of the double-floored culture system (Fig. 1B), and the cells were cultured for another

24, 48, 72, and 96 h. CM samples from each time point were collected and stored at -80°C until use. Western blot analysis revealed that the flotillin-1 and -2 levels in the blood-side CM increased in a time-dependent manner, and that they were suppressed by A β 42 treatment; the levels were significantly lower after A β 42 treatment for 96 h (Flot-1: $p=0.045$, Flot-2: $p=0.043$) (Fig. 2A). As shown in Fig. 2B, the levels of flotillin-1 and -2 in the blood-side CM were significantly lower in the CM with the 2 μM A β 42 treatment than in the control CM at 96 h. On the other hand, we found that A β 42 did not alter the cellular flotillin-1 and -2 levels (Fig. 2C, D). Interestingly, A β 42 did not have any effect on flotillin secretion into the blood side when iBMECs were cultured without astrocytes (Additional file 1: Fig. S1A, B). These results suggested that although A β does not have a direct effect on iBMECs to regulate flotillin release from iBMECs, it has an indirect effect via astrocytes, from which some factor(s) may be released to regulate flotillin secretion from iBMECs into the blood-side CM.

Decreased FGF-2 production and secretion in astrocytes of the in vitro BBB model

To identify the factor(s) secreted by astrocytes, that have an effect on iBMECs to regulate flotillin release into the upper chamber (blood side), we used the in vitro BBB model shown in Fig. 1B. Previous studies have shown that basic fibroblast growth factor (FGF-2) released from astrocytes affects the function of the BBB [13, 14]. We examined whether the FGF-2 levels are associated with A β 42 treatment in the in vitro BBB model. As shown in Fig. 3, we found that the cellular FGF-2 level was significantly reduced in astrocytes when A β 42 was added into the lower chamber (brain side) at a concentration of 2 μM for 96 h (Fig. 3A, B). We next measured the FGF-2 level in the brain-side CM by enzyme-linked immunosorbent assay (ELISA). As shown in Fig. 3C, A β 42 treatment significantly decreased the FGF-2 level in the brain-side CM. In contrast, A β 42 did not affect the FGF-2 level in the in vitro BBB models using iBMECs or astrocytes alone (Additional file 1: Figs. S2A, B, 3A, B). We also found that co-culture of iBMECs and astrocytes significantly increased FGF-2 levels in astrocytes (Additional file 1: Fig. S4A, B), suggesting that the iBMECs release factors to increase FGF-2 levels in astrocytes.

FGF-2 restored the A β 42-induced decrease in flotillin secretion

We next investigated the role of FGF-2 in flotillin secretion in the in vitro BBB model. To examine whether the reduced level of FGF-2 in the brain side was responsible for the decreased level of flotillin secretion from iBMECs in the blood side, A β 42 was added into the brain side in

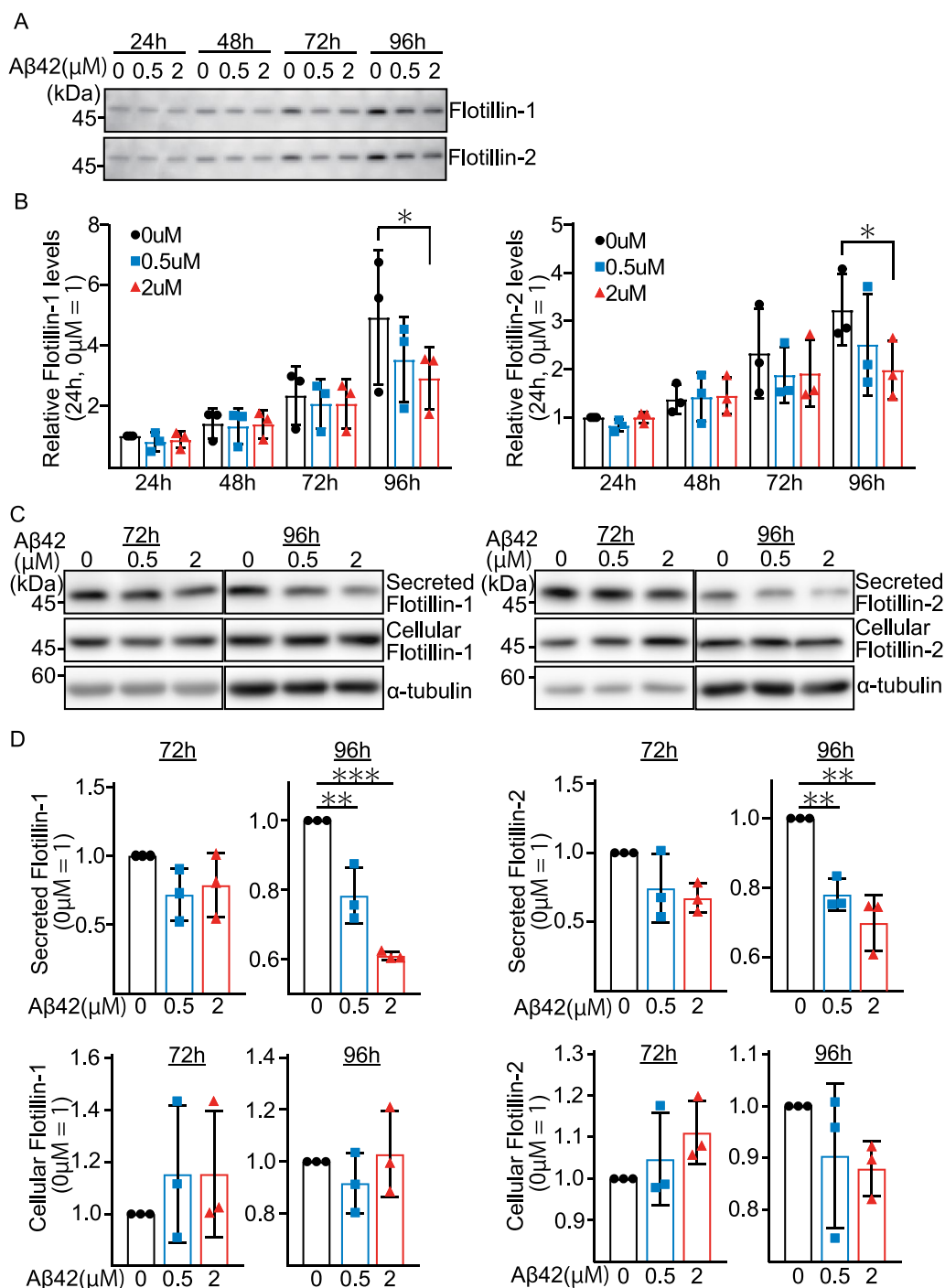


Fig. 2 Aβ42 treatment decreased the flotillin secretion level in the blood-side CM, but did not alter the cellular flotillin level. **A** The level of flotillin secretion in the blood side increased in a time-dependent manner. The levels of flotillin-1 and -2 in the CM were analyzed by western blotting. **B** The levels of flotillin-1 and -2 secretion in the blood side were decreased by Aβ treatment, as determined using a fluorogenic substrate. Statistical significance was calculated using one-way ANOVA and the Tukey test (* $p < 0.05$). Data are shown as the mean \pm standard deviation (SD; $n = 3$). **C** Cellular flotillin levels were determined by western blotting and densitometry. **D** Quantification of the protein levels of flotillin-1 and -2 normalized to α -tubulin, and expressed as values relative to the control. Statistical significance was calculated using one-way ANOVA and the Tukey test (* $p < 0.05$, ** $p < 0.01$). Data are shown as the mean \pm SD ($n = 3$)

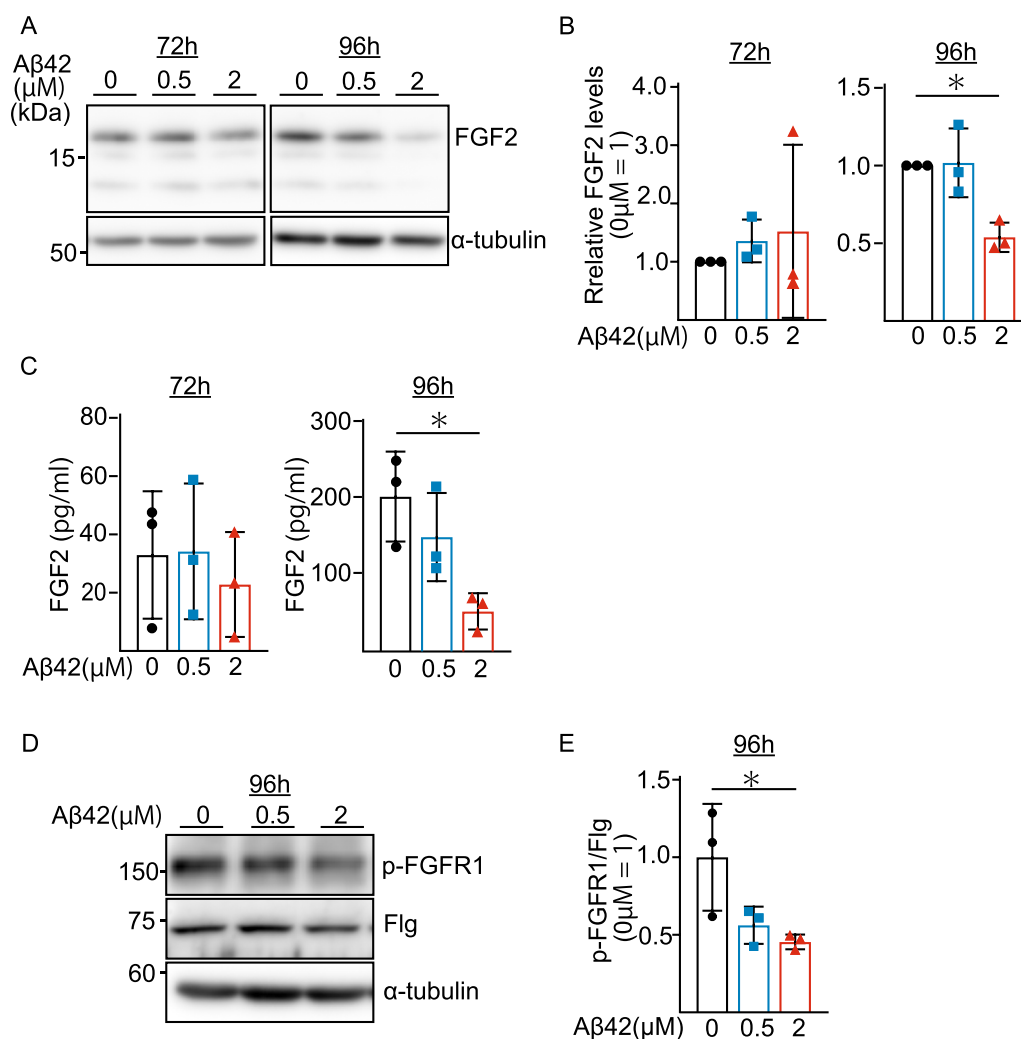


Fig. 3 The cellular and secreted FGF-2 levels were decreased in astrocytes when Aβ42 was added into the brain side. **A** Western blot analysis of intracellular FGF-2. **B** Quantification of the FGF-2 protein levels normalized to α-tubulin, and expressed as values relative to the control. Statistical significance was calculated using one-way ANOVA and the Tukey test (**p* < 0.05). Data are shown as the mean ± SD (*n* = 3). **C** Secreted FGF-2 in the brain side was measured using FGF-2 ELISA kits. Statistical significance was calculated using one-way ANOVA and the Tukey test (**p* < 0.05). Data are shown as the mean ± SD (*n* = 3). The Aβ42 treatment-induced decrease in the FGF-2 levels regulated the phosphorylation levels of FGFR1 in iBMECs. **D** Protein levels were determined by western blotting and quantified by densitometry. **E** Quantification of phosphorylated (p-) FGFR1 levels normalized to Flg/FGFR1 levels, and expressed as values relative to the control. Statistical significance was calculated using one-way ANOVA and the Tukey test (***p* < 0.01). Data are shown as the mean ± SD (*n* = 3)

the presence or absence of FGF-2 at concentrations of 1 and 10 ng, and the level of flotillin in the blood side was determined (Fig. 4A). Consistent with the results shown in Fig. 2, Aβ42 treatment of the brain side decreased the secretion levels of flotillin-1 and -2 in the blood side 96 h after treatment (Fig. 4B, C). Of note, this decrease in flotillin secretion was restored in a dose-dependent manner by the administration of recombinant FGF-2 into the brain side. (Fig. 4B, C). Thus, it is likely that the changes in flotillin secretion due to Aβ42 treatment were mediated by FGF-2 from astrocytes. These findings indicated

that the decrease in flotillin in the blood-side CM was mediated by decreased FGF-2 production and secretion in astrocytes under the influence of Aβ42.

Discussion

In this study using the in vitro BBB model, we revealed for the first time the mechanism by which Aβ in the brain affects the blood flotillin level in an endothelial cell-mediated manner. Our findings are as follows. (1) In the in vitro BBB model in which iBMECs were plated on the upper compartment (blood side) and astrocytes

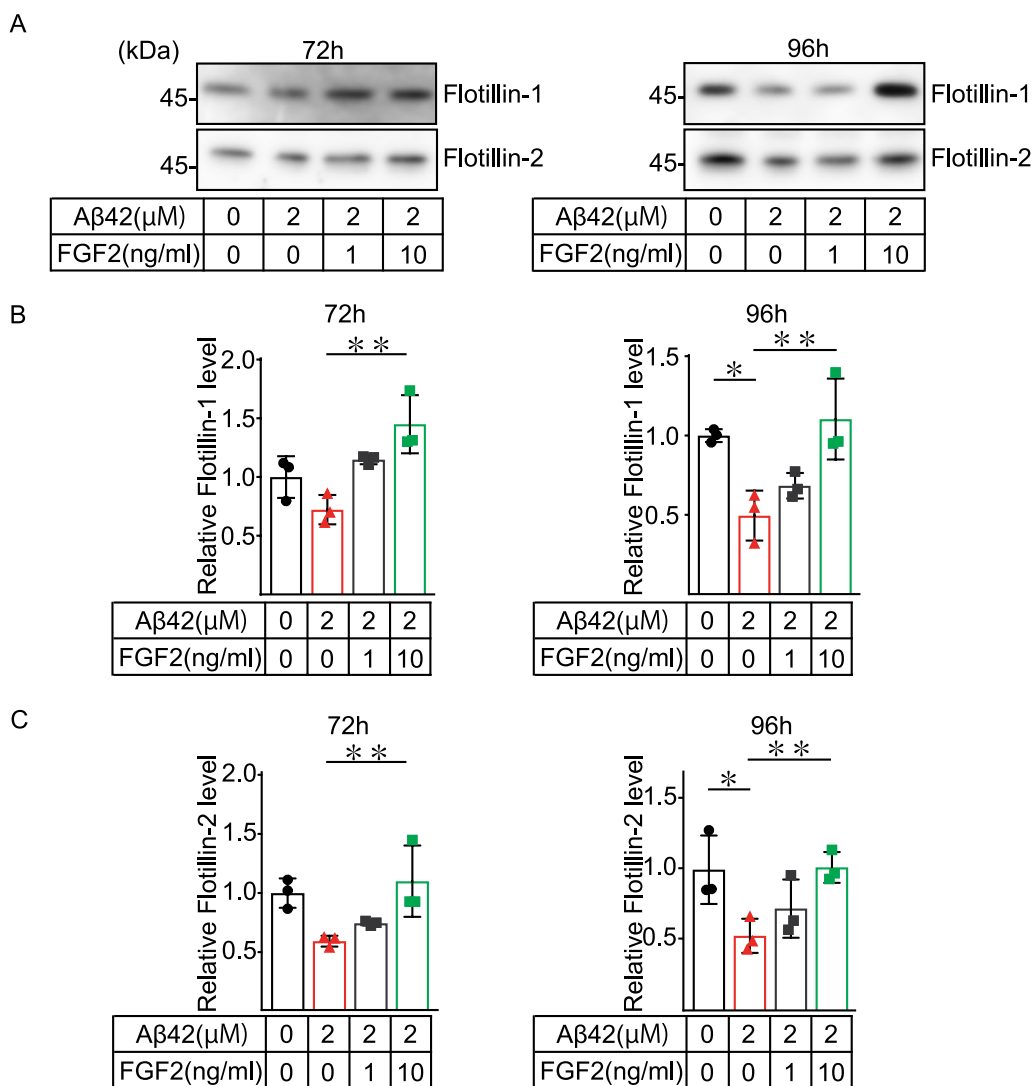


Fig. 4 The Aβ42 treatment-induced decrease in the secretion of flotillin on the blood side was restored by the addition of FGF-2. **A** Protein levels were determined by western blotting and quantified by densitometry. **B, C** Statistical significance was calculated using one-way ANOVA and the Tukey test (**p* < 0.05). Data are shown as the mean ± SD (*n* = 3)

were plated on the lower compartment (brain side), Aβ42 treatment of the brain side significantly reduced the level of flotillin released into the blood side. (2) The FGF-2 level in the brain side was significantly reduced by Aβ42 treatment of the brain side. (3) The reduced flotillin release into the blood side induced by Aβ treatment of the brain side was restored in a dose-dependent manner by the addition of FGF-2 into the brain side.

These results showed that the addition of Aβ into the brain side reduced the levels of both cellular FGF-2 in astrocytes and secreted FGF-2 from astrocytes, which may regulate iBMECs to release less flotillin into the blood side. This notion is supported by the fact that Aβ treatment of the brain side of the cultures without

astrocytes had no effect on flotillin release from iBMECs into the blood side (Additional file 1: Fig. S1A, B). These results indicated that the effect of Aβ in the brain side on the release of flotillin in the blood side was not a direct effect of Aβ on iBMECs, but an indirect effect via astrocytes. Therefore, it seems reasonable to assume that the reduced level of FGF-2 in the brain side reduced FGF-2-mediated signal transduction via the FGF-2 receptor of iBMECs. This notion is supported by our results shown in Fig. 3D that Aβ treatment suppressed the phosphorylation of FGFR1 in iBMECs (Fig. 3D, E). In line with our findings, previous studies have shown that exogenous basic fibroblast growth factor (FGF-2) treatment preserved the integrity of the BBB, and that secondary brain

injury was attenuated via FGFR-induced activation of the PI3K-Akt signaling pathway in mice [13, 14]. In addition, there have been reports that the FGF-2/FGFR1 pathway is involved in vascular remodeling, astrocyte inflammation, and extracellular vesicle (EV) release [15, 16].

The potential usefulness of EVs and exosomes for the diagnosis of AD has been reported [17, 18], and our findings indicated a new mechanism by which high levels of A β in the brain may reduce the levels of molecules related to EVs and exosomes, such as flotillin, in blood, providing a rationale for their use as biomarkers for AD. Notably, our finding that A β treatment on the brain side reduced flotillin release from iBMECs on the blood side (Fig. 2) indicated a novel mechanism by which brain A β may exert its effects on blood molecule(s). Our data also provide a rationale that supports our previous finding that blood flotillin levels are significantly lower in AD patients who are amyloid-PET-positive than in patients with non-AD and vascular dementia [6]. Thus, these results further strengthen the possibility that flotillin may be useful as a diagnostic marker for AD.

The BBB comprises pericytes, astrocytes, and microglia that cooperate to maintain neural circuits, synaptic transmission, synaptic remodeling, angiogenesis, and neurogenesis through cross-talk between these cells [11, 12].

We have shown in Additional file 1: Fig. S4 that co-culture of iBMECs and astrocytes increase FGF-2 levels in astrocytes. These results suggest that iBMECs release some factors to increase FGF-2 levels in astrocytes. Although, the *in vitro* BBB model used in the present study consisted only of iBMECs and astrocytes, this established co-culture system was used because the iBMECs differentiated from human iPS cells form tight junctions that provide high trans-endothelial electrical resistance (TEER) values (over 1500 Ωm^2 ; see Fig. 1C), and the values are much higher than those obtained with other models using rodent cells [11, 12]. Nonetheless, the findings of this study should be confirmed in a BBB model using three types of cells (pericytes, astrocytes, and microglia) in the future.

Astrocytes play an important role in the formation and maintenance of the BBB. During angiogenesis in the central nervous system, astrocytes extend polar endfeet to the luminal side of cerebral blood vessels, and help induce mature cerebral vessels by expressing transporters and anti-permeability proteins, and secreting growth factors [10]. In addition, astrocytes have also been shown to secrete a number of anti-inflammatory and tissue-protective mediators that act on numerous cells to regulate inflammatory conditions [10]. FGF has a multifaceted role in the developing and mature central nervous system, and it has been shown

to regulate astrocyte morphogenesis, maturation, and function in both healthy and disease states [10]. In this study, we found that A β treatment significantly reduced the level of cellular and secreted FGF-2 in cultured astrocytes (Fig. 3). Previous studies have shown that FGF-2 is one of the most plausible astrocytic factors that induce BBB properties [19] and enhance BBB function in endothelial cells by increasing the expression of occludin and ZO-1 [20]. Consistent with these reports, our findings showed that FGF-2 secreted from astrocytes had an effect on iBMECs, i.e., the FGF-2 at the brain side regulated the secretion of flotillin from iBMECs in the blood side. Based on the findings from a number of recent studies, it was revealed that the relationship between A β and BBB can be explained by a “two-hit” theory, i.e., a direct negative effect of cerebrovascular flow reductions and BBB breakdown, leading to neuronal dysfunction and A β accumulation (hit 1), and A β -mediated BBB dysfunction (hit 2) [21]. Our findings from the present study partly support this idea of brain A β -mediated dysregulation of BBB function in terms of the regulation of flotillin release in the blood side.

Based on our data, it is possible that flotillin release from iBMECs in the blood side is regulated by astrocyte-derived FGF-2 in the brain side. A β 42 attenuated the FGF-2 release from astrocytes, and may therefore lead to reduced flotillin release from iBMECs. Although A β affects BBB function by reducing FGF-2 secretion, we did not observe any differences in the TEER values with A β treatment (Fig. 1C). One possible explanation is that the decrease in FGF-2 secretion from astrocytes due to A β treatment was insufficient to change the TEER values in this BBB model.

In summary, we have identified a novel molecular mechanism by which A β in the brain decreases blood flotillin levels, i.e., brain A β has an indirect effect on iBMECs to modulate flotillin release from iBMECs. To date, it has been thought that altered metabolites in the brain exit the brain via intramural periarterial drainage or the glymphatic system to blood [22, 23]. Therefore, the pathway revealed in the present study is a novel pathway that differs from the ones that have been hypothesized in the past.

Abbreviations

AD	Alzheimer's disease
A β	Amyloid b-protein
BBB	Blood-brain barrier
FGF-2	Basic fibroblast growth factor
iBMECs	Microvascular endothelial cells obtained from human induced pluripotent stem cells
PET	Positron-emission tomography
CM	Conditioned medium

ELISA Enzyme-linked immunosorbent assay
TEER Trans-endothelial electrical resistance

Supplementary Information

The online version contains supplementary material available at <https://doi.org/10.1186/s13041-023-01005-1>.

Additional file 1: Figure S1. A β 42 treatment to the brain side did not affect flotillin secretion from iBMECs into the blood side, when iBMECs were cultured without astrocyte (mono-cultured). (A) Flotillin-1, -2 levels were determined by Western blotting and quantified by densitometry. (B) Statistical significance was calculated using the unpaired Student's *t*-test (ns, not significant). Data are represented as the mean \pm SD ($n = 3$).

Additional file 1: Figure S2. A β 42 treatment did not affect the cellular FGF-2 level in iBMECs. Mono-cultured BBB models were treated with or without A β 42 to the brain side for 96 h. (A) Cellular FGF-2 levels were determined by Western blotting and quantified by densitometry. (B) Statistical significance was calculated using the unpaired Student's *t*-test (ns, not significant). Data are represented as the mean \pm SD ($n = 3$).

Additional file 1: Figure S3. A β 42 treatment tended to but not significantly decrease the cellular FGF-2 level in astrocytes. (A) Astrocyte were treated with or without A β 42 for 96 h, and cellular FGF-2 levels were determined by Western blotting and quantified by densitometry. (B) Statistical significance was calculated using the one-way ANOVA and Tukey test ($*p < 0.05$). Data are represented as the mean \pm SD ($n = 3$).

Additional file 1: Figure S4. Co-culture of iBMECs and astrocytes significantly increased FGF-2 levels in astrocytes. (A) iBMEC and astrocyte were cultured for 96 h, and cellular FGF-2 levels were determined by Western blotting and quantified by densitometry. (B) Statistical significance was calculated using the unpaired Student's *t*-test ($*p < 0.05$). Data are represented as the mean \pm SD ($n = 3$).

Acknowledgements

The authors thank Chisato Ohsumi for her technical support.

Author contributions

Conceptualization: MM; study design: MM, TN, TH; data acquisition: TN, TH, CY, YG, YSu, SI, HS, data interpretation: MM, TN, TH, KZ, TM; original draft: MM, TN; writing-review and editing: MM, TN, YSh, KZ. All authors read and approved the final manuscript.

Funding

This work was supported by AMED under grant number JP20dk0207050h001 (to M.M.) and Grant Number JP20de0107002 (to M.M.), and by the Grant-in-Aid for Scientific Research C 19K07846 and 22K07352 (to K. Z.) from the Ministry of Education, Culture, Sports, Science, and Technology, Japan. This work was supported by Grants-in-aid from "the 24th General Assembly of the Japanese Association of Medical Sciences" (to K. Z.), the Daiko Foundation (to K. Z.), the Hirose International Scholarship Foundation (to K. Z.), and the Daiwa Securities Health Foundation (to T. N.).

Availability of data and materials

Data sharing not applicable to this article as no datasets were generated or analyzed during the current study.

Declarations

Ethics approval and consent to participate

All experiments were carried out in conformity with the National Institute of Health Guideline for the Care and Use of Laboratory Animals and approved by the Nagoya City University Institutional Care and Use of Laboratory Animal Committee.

Consent for publication

Not applicable.

Competing interests

The authors declare that they have no conflict of interest to declare.

Received: 22 September 2022 Accepted: 13 January 2023

Published online: 26 January 2023

References

- Knopman DS, Amieva H, Petersen RC, Chetelat G, Holtzman DM, Hyman BT, Nixon RA, Jones DT. Alzheimer disease. *Nat Rev Dis Primers*. 2021;7(1):33.
- McDade EM. Alzheimer disease. *Continuum (Minneapolis)*. 2022;28(3):648–75.
- Jellinger KA. Neuropathological assessment of the Alzheimer spectrum. *J Neural Transm (Vienna)*. 2020;127(9):1229–56.
- Fink HA, Linskens EJ, Silverman PC, McCarten JR, Hemmy LS, Ouellette JM, Greer NL, Wilt TJ, Butler M. Accuracy of biomarker testing for neuropathologically defined Alzheimer disease in older adults with dementia. *Ann Intern Med*. 2020;172(10):669–77.
- Musiek ES, Morris JC. Possible consequences of the approval of a disease-modifying therapy for Alzheimer disease. *JAMA Neurol*. 2021;78(2):141–2.
- Abdullah M, Kimura N, Akatsu H, Hashizume Y, Ferdous T, Tachita T, Iida S, Zou K, Matsubara E, Michikawa M. Flotillin is a novel diagnostic blood marker of Alzheimer's disease. *J Alzheimers Dis*. 2019;72(4):1165–76.
- Schulte T, Paschke KA, Laessing U, Lottspeich F, Stuermer CA. Reggie-1 and reggie-2, two cell surface proteins expressed by retinal ganglion cells during axon regeneration. *Development*. 1997;124(2):577–87.
- Yamashita M, Aoki H, Hashita T, Iwao T, Matsunaga T. Inhibition of transforming growth factor beta signaling pathway promotes differentiation of human induced pluripotent stem cell-derived brain microvascular endothelial-like cells. *Fluids Barriers CNS*. 2020;17(1):36.
- Abdullah M, Nakamura T, Ferdous T, Gao Y, Chen Y, Zou K, Michikawa M. Cholesterol regulates exosome release in cultured astrocytes. *Front Immunol*. 2021;12: 722581.
- Liu LR, Liu JC, Bao JS, Bai QQ, Wang GQ. Interaction of microglia and astrocytes in the neurovascular unit. *Front Immunol*. 2020;11:1024.
- Wilhelm I, Fazakas C, Krizbai IA. In vitro models of the blood-brain barrier. *Acta Neurobiol Exp (Wars)*. 2011;71(1):113–28.
- Vigh JP, Kincses A, Ozgur B, Walter FR, Santa-Maria AR, Valkai S, Vastag M, Neuhaus W, Brodin B, Der A, Deli MA. Transendothelial electrical resistance measurement across the blood–brain barrier: a critical review of methods. *Micromachines (Basel)*. 2021. <https://doi.org/10.3390/mi12060685>.
- Giavazzi R, Sennino B, Coltrini D, Garofalo A, Dossi R, Ronca R, Tosatti MP, Presta M. Distinct role of fibroblast growth factor-2 and vascular endothelial growth factor on tumor growth and angiogenesis. *Am J Pathol*. 2003;162(6):1913–26.
- Carmen-Orozco RP, Davila-Villacorta DG, Cauna Y, Bernal-Teran EG, Bitterfeld L, Sutherland GL, Chile N, Celiz RH, Ferrufino-Schmidt MC, Gavidia CM, Sterling CR, Garcia HH, Gilman RH, Verastegui MR. Blood–brain barrier disruption and angiogenesis in a rat model for neurocysticercosis. *J Neurosci Res*. 2019;97(2):137–48.
- Siafakas NM, Antoniou KM, Tzortzaki EG. Role of angiogenesis and vascular remodeling in chronic obstructive pulmonary disease. *Int J Chron Obstruct Pulmon Dis*. 2007;2(4):453–62.
- Hayes AJ, Farrugia BL, Biose IJ, Bix GJ, Melrose J. Perlecan, a multi-functional, cell-instructive, matrix-stabilizing proteoglycan with roles in tissue development has relevance to connective tissue repair and regeneration. *Front Cell Dev Biol*. 2022;10: 856261.
- Li TR, Wang XN, Sheng C, Li YX, Li FZ, Sun Y, Han Y. Extracellular vesicles as an emerging tool for the early detection of Alzheimer's disease. *Mech Ageing Dev*. 2019;184: 111175.
- Hornung S, Dutta S, Bitan G. CNS-derived blood exosomes as a promising source of biomarkers: opportunities and challenges. *Front Mol Neurosci*. 2020;13:38.
- Sobue K, Yamamoto N, Yoneda K, Hodgson ME, Yamashiro K, Tsuruoka N, Tsuda T, Katsuya H, Miura Y, Asai K, Kato T. Induction of blood–brain

- barrier properties in immortalized bovine brain endothelial cells by astrocytic factors. *Neurosci Res.* 1999;35(2):155–64.
20. Toyoda K, Tanaka K, Nakagawa S, Thuy DH, Ujifuku K, Kamada K, Hayashi K, Matsuo T, Nagata I, Niwa M. Initial contact of glioblastoma cells with existing normal brain endothelial cells strengthen the barrier function via fibroblast growth factor 2 secretion: a new in vitro blood–brain barrier model. *Cell Mol Neurobiol.* 2013;33(4):489–501.
 21. Kisler K, Nelson AR, Montagne A, Zlokovic BV. Cerebral blood flow regulation and neurovascular dysfunction in Alzheimer disease. *Nat Rev Neurosci.* 2017;18(7):419–34.
 22. Albargothy NJ, Johnston DA, MacGregor-Sharp M, Weller RO, Verma A, Hawkes CA, Carare RO. Convective influx/glymphatic system: tracers injected into the CSF enter and leave the brain along separate periarterial basement membrane pathways. *Acta Neuropathol.* 2018;136(1):139–52.
 23. Iliff JJ, Wang M, Zeppenfeld DM, Venkataraman A, Plog BA, Liao Y, Deane R, Nedergaard M. Cerebral arterial pulsation drives paravascular CSF–interstitial fluid exchange in the murine brain. *J Neurosci.* 2013;33(46):18190–9.

Publisher's Note

Springer Nature remains neutral with regard to jurisdictional claims in published maps and institutional affiliations.

Ready to submit your research? Choose BMC and benefit from:

- fast, convenient online submission
- thorough peer review by experienced researchers in your field
- rapid publication on acceptance
- support for research data, including large and complex data types
- gold Open Access which fosters wider collaboration and increased citations
- maximum visibility for your research: over 100M website views per year

At BMC, research is always in progress.

Learn more biomedcentral.com/submissions

